

- High resolution absolute encoder for motor feedback
- SSI or BiSS-C interface
- Resolution up to 25 bit
- Additional sine/cosine output 2048 PPR
- Tapered shaft design
- Choice of additional fixing plates



ASB62

### ENVIRONMENTAL SPECIFICATIONS

Shock:	250 g, 6 ms acc. to CEI EN 60068-2-27
Vibrations:	10 g, 5-2000 Hz acc. to CEI EN 60068-2-6
Protection:	IP40
Operating temperature range:	-30°C+100°C (-22°F +212°F)
Storage temperature range:	-40°C+100°C (-40°F +212°F) (98% R.H. without condensation)

### MECHANICAL SPECIFICATIONS

Dimensions:	see drawing
Shaft diameter:	solid, 1:10 taper
Shaft loading (axial, radial):	40 N max.
Shaft rotational speed:	6000 rpm max.
Starting torque at 20°C:	0,15 Ncm (typical)
Bearings life:	10 <sup>9</sup> rev. min.
Electrical connections:	PCB connector (connection cable to be ordered separately)
Weight:	~ 200 g (7 oz)

### ELECTRICAL SPECIFICATIONS

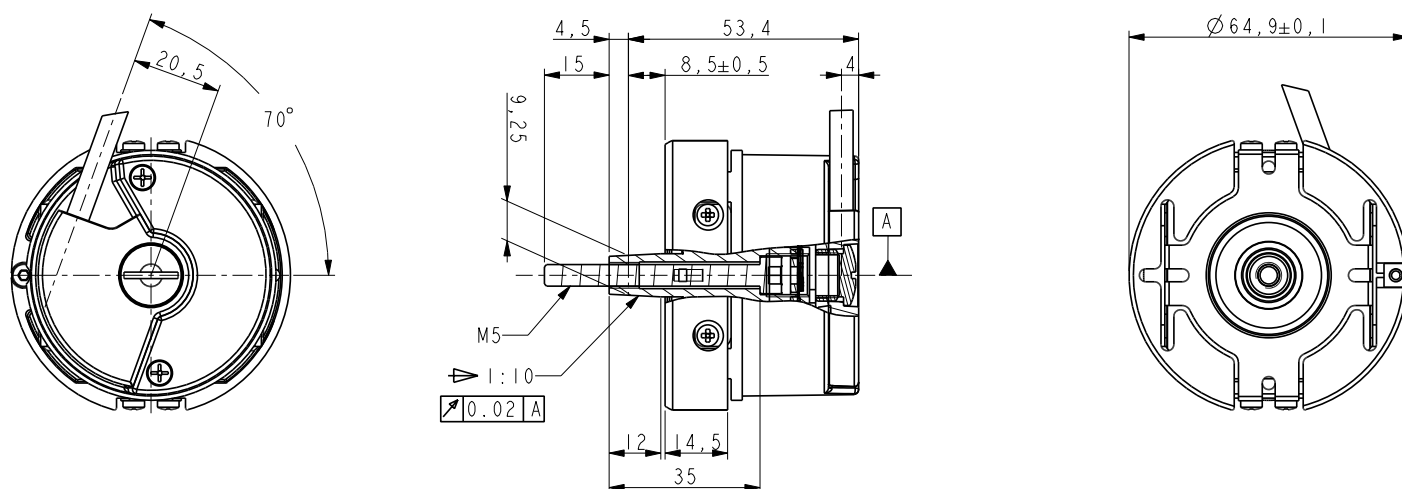
Resolution (PPR):	absolute: up to 25 bit incremental: 2048 PPR sin/cos
Counting frequency:	> 100 kHz max.
Output circuits:	SSI (RS422), clock rate < 4 MHz BiSS-C, clock rate < 10 MHz
Output code:	Gray, Binary
Power supply:	+5Vdc ±5%, +10Vdc +30Vdc
Consumption:	80 mA max.
Output current (each channel):	0,5 W
EMC:	electro-magnetic immunity, according to: EN 61000-4-2 EN 61000-4-4
Functions:	<ul style="list-style-type: none"> <li>• Counting direction (input)</li> <li>• Zero setting/Preset (input)</li> </ul>

### MATERIALS

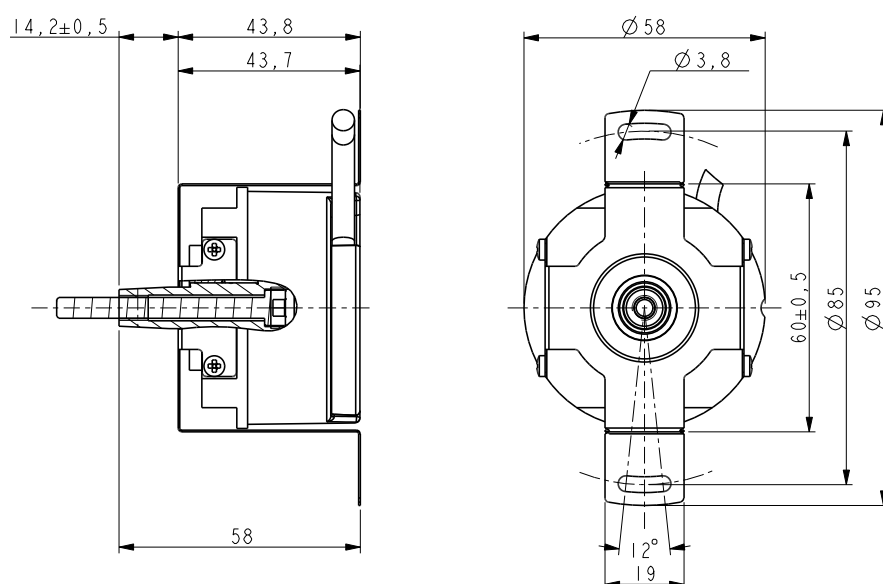
Flange:	aluminium, anticorodal, UNI EN AW-6082
Housing:	zamak 15, UNI EN1774
Bearings:	ABEC 5
Shaft:	stainless steel, non-magnetic - UNI EN 4305

### ACCESSORIES

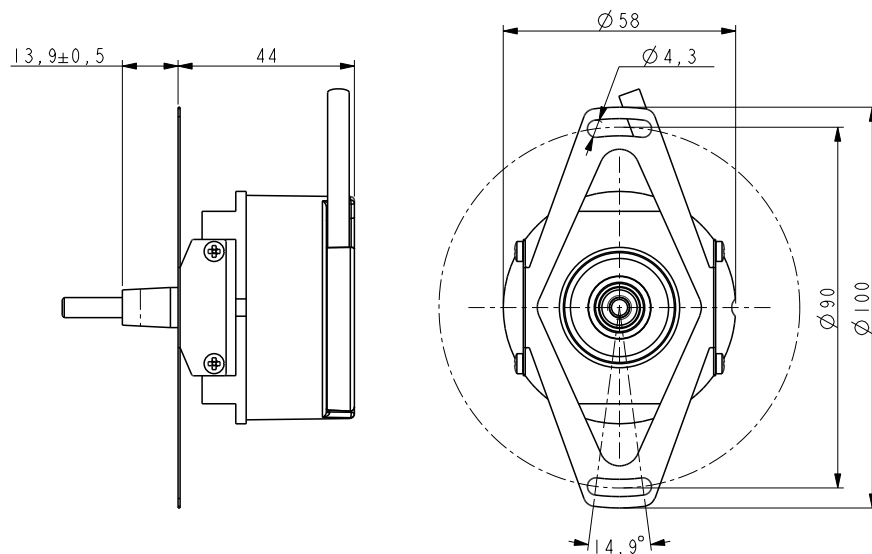
KIT MOL3255:	"B" fixing plate and screws
KIT MOL2311:	"D" fixing plate and screws
KIT MOL3035:	"E" fixing plate and screws
EC-ASB/CB62-1:	Connection cable 1 m
EC-ASB/CB62-4:	Connection cable 4 m
EC-ASB/CB62-5:	Connection cable 5 m
EC-ASB/CB62-7:	Connection cable 7 m
EC-ASB/CB62-10:	Connection cable 10 m



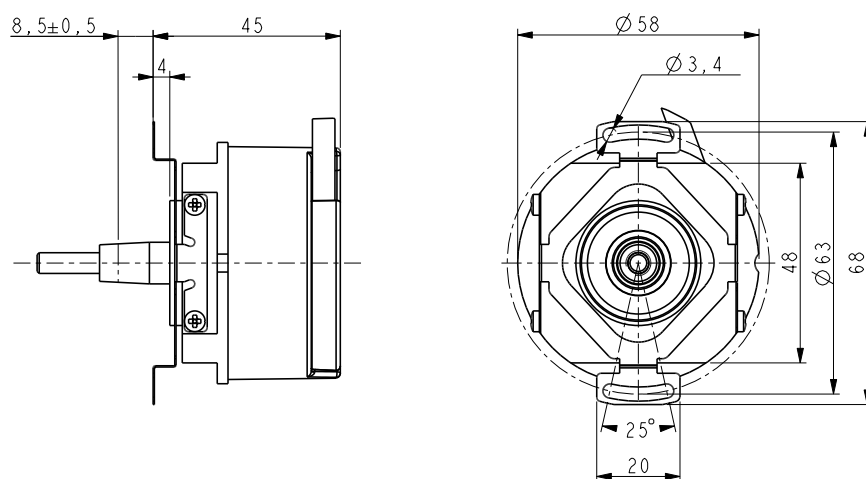
ASB62



Version B (MOL3255)



Version D (MOL2311)



Version E (MOL3035)

## Order code

ASB62	XX	XXX	-	X	-	X	/Sxxx
	(a)	(b)		(c)		(d)	(e)

## Accessories order code

EC	-	ASB/CB62	-	X
----	---	----------	---	---

## (a) RESOLUTIONS

13 = 8192 cpr  
17 = 131072 cpr  
21 = 2097152 cpr  
25 = 33554432 cpr

## (b) OUTPUT CIRCUITS

SC1 = BiSS C-mode + 2048 PPR sin/cos +5Vdc ±5%  
SC2 = BiSS C-mode + 2048 PPR sin/cos +10 +30Vdc  
GG1 = SSI, MSB aligned, Gray + 2048 PPR sin/cos +5Vdc ±5%  
GG2 = SSI, MSB aligned, Gray + 2048 PPR sin/cos +10 +30Vdc  
BG1 = SSI, MSB aligned, Binary + 2048 PPR sin/cos +5Vdc ±5%  
BG2 = SSI, MSB aligned, Binary + 2048 PPR sin/cos +10 +30Vdc

## (c) SHAFT DIAMETER

C10 = 1:10 taper

## (d) FIXING PLATE

- = expansion flange (standard)  
B = version B fixing plate  
D = version D fixing plate  
E = version E fixing plate

## (e) CUSTOM VERSION

EC-ASB/CB62-1 = Connection cable 1 m  
EC-ASB/CB62-4 = Connection cable 4 m  
EC-ASB/CB62-5 = Connection cable 5 m  
EC-ASB/CB62-7 = Connection cable 7 m  
EC-ASB/CB62-10 = Connection cable 10 m

Document release	Date	Description
1.1	14.12.2020	Fixing plate updated
1.2	02.02.2021	Materials updating